

# Grade 8 - Unit 5 – Fresh and Saltwater Systems Concepts

## Water Distribution

Water source	% of total water	Potable, or not?
Oceans	97.24%	Saltwater
Icecaps, Glaciers	2.14%	Frozen
Ground water	0.61%	Fresh - but not entirely accessible
Fresh-water lakes	0.009%	Potable
Inland seas	0.008%	Saltwater
Soil moisture	0.005%	Indirect access
Atmosphere	0.001%	Indirect access
Rivers	0.0001%	Potable
Total water	100%	

## Water Action



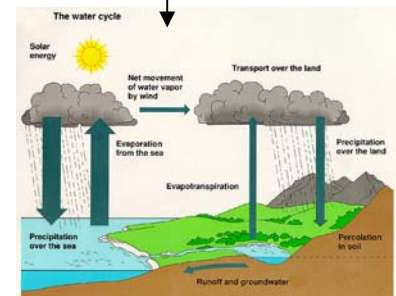
## Water Systems

Watersheds  
Continental Drainage Systems

Glaciers → Glacial Landform Features

## Currents

### Climate



## Water Quality

Chemical

Biological

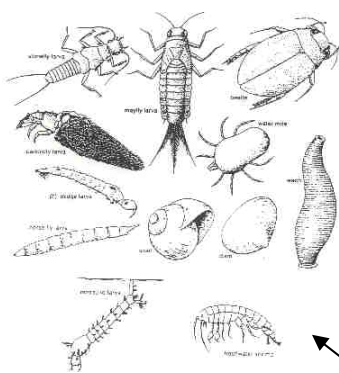
Water Quality Testing

Water, Water, Everywhere

Monitoring Quality

## Water for Life

Biological Indicators



Factors Affecting the Diversity of Aquatic Organisms

- Temperature
- Light
- Water Movement
- Environmental Changes
- Seasonal
- Short-Term
- Pressure
- Salinity
- Long-Term

## Water Use

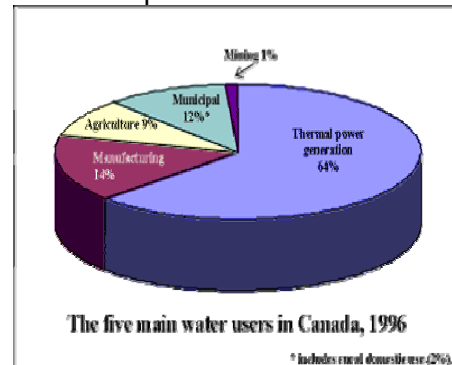


Water Use  
Processes to Improve Water Quality

Distillation

Reverse Osmosis

## Human Impact on Water Resources



Factors Affecting Water Quality  
Runoff  
Dumping  
Spills  
Sewage  
Construction  
Pollution