

UNIT B TEST Plants For Food and Fibre



Student Name

Class

1. Products from these plants help to make ice cream, chocolate milk, yogurt, whipped cream, pies, jellies and candies. They are also used to thicken food. The plant is ...

- A. **cocoa**
- B. **canola**
- C. **seaweed**
- D. **Sugar beet**

2. The most expensive fibre in the world is ...

- A. **satin**
- B. **silk**
- C. **velcro**
- D. **hemp**

3. Cotton is a natural fibre that has been around for centuries. It is used extensively throughout the world and is the world's most important non-edible plant. Cotton fibres come from cotton ...

- A. **flowers**
- B. **seeds**
- C. **stems**
- D. **leaves**

4. Many plants are used for medicine. Aspirin is a good example of a medicine that has been synthetically developed in the laboratory. Another very powerful pain medication is morphine, but it cannot be manufactured. Instead, it is extracted from the thick fluid of the ...

- A. **quinine cinchona tree**
- B. **poppy seed pod**
- C. **echinacea root**
- D. **ginkgo bilboa root**

5. Lubricants are used to oil machinery parts to ensure they work effectively. Racing car engines and airplane engines use lubricants that are partially made from ...

- A. **vegetable and latex seed oil**
- B. **methanol and ethanol oil**
- C. **hemlock and latex oil**
- D. **coconut and castor bean oil**

6. The roots of a plant perform several functions, including all of the following EXCEPT ...

- A. **transpire water from their fibres**
- B. **support and anchor the plant**
- C. **absorb water and minerals**
- D. **store food**

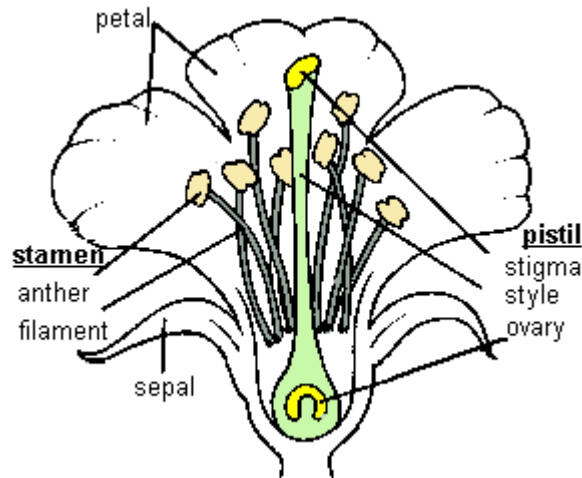
7. Root crops are those types of crops that grow in a very short period of time and can survive when there is little rainfall. Another important quality which makes them an important part of the world's vegetable diet is that they ...

- A. **are very tasty**
- B. **can be frozen easily**
- C. **can be stored for a long time**
- D. **are easily harvested**

8. Diffusion is the tendency of particles in a gas or a liquid to become ...
- A. less concentrated, in areas of high concentration**
 - B. highly concentrated, in areas of low concentration**
 - C. evenly distributed, by moving from an area of low concentration**
 - D. evenly distributed, by moving from an area of high concentration**
9. Stems have different functions. They are used for support, to transport water and nutrients between the leaves and roots and they can store food. These stems are stems that grow underground ...
- A. runners**
 - B. rhizomes**
 - C. cuticles**
 - D. corms**
10. The leaves are the plants food factories. During the day, the plant uses carbon dioxide and water. When there is no light, the plant releases carbon dioxide and takes in oxygen. This process is called ...
- A. photosynthesis**
 - B. transpiration**
 - C. respiration**
 - D. osmosis**
11. When a plant has a particular characteristic, that is desirable (like a specific flower color), a plant can be grown producing only that color. In order to do this, only those plants that have ...
- A. the desirable color, should be selectively bred**
 - B. a shade of that color, should be bred**
 - C. the ability to reproduce different colors, should be bred**
 - D. various color tones, similar to the desired color, should be bred**
12. Canola is an example of a plant that was developed by selective breeding. This new variety of plant has seed that create a 'good-tasting' oil. The original parent plant produces oil from its seeds which can be used to lubricate engines (but is not edible). The parent plant is ...
- A. flax**
 - B. wheat**
 - C. mustard**
 - D. rapeseed**
13. A strawberry plant sends out 'runners', which, when covered over by soil, can grow into a new strawberry plant, identical to its parent. This type of reproduction is called ...
- A. asexual**
 - B. sexual**
 - C. grafting**
 - D. selective breeding**
14. Sexual reproduction occurs in many plants. The plants reproductive parts are contained in the flower. The seed is formed once the plant has been pollinated. The cotyledon is a vital part of the 'seed in storage'. It's function is to ...
- A. protect the embryo**
 - B. fertilize the egg**
 - C. provide food**

D. enable the seeds to disperse

15. Use this flower diagram to help you answer the next question.



It is important to know all the parts of a flower and the function of each part.
Complete the table below by matching the flower part with its function ...

Flower Parts	Function
1. petal	___ male reproductive organ
2. pistil	___ part of the flower where pollen is produced and stored
3. stigma	___ green part, protects the flower before it opens
4. style	___ stalk that supports the stigma
5. ovary	___ brightly colored parts of the flower to attract insects and birds
6. stamen	___ stalk that supports the anther
7. anther	___ sticky 'lip' of the pistil that captures pollen grains
8. filament	___ female reproductive organ
9. sepal	___ swollen base of the pistil containing ovules

16. The necessity to grow food and fibre for people around the world has created some important issues, which need to be addressed. The concept that allows us to grow food and fibre - while keeping a natural balance within the living environment is called ...

- A. ecological trust**
- B. sustainability**
- C. eco-regionalization**
- D. mono-culturalism**

17. This crop is the third most valuable crop in Alberta. It can tolerate saltier soils and drier conditions than other crops. It is fed to livestock and used to make malt flavouring. The crop is ...

- A. oats**
- B. canola**
- C. alfalfa**
- D. barley**

18. When a farmer grows only one type of plant in a field it is considered a ...

- A. typical tillage style**
- B. uniform culture**
- C. monoculture**
- D. specialized crop**

19. The plough was invented in the Middle East and has been an important farming tool for over 5000 years. In the early 1900's a horse was used to pull a plough through the fields. With the technology of today, a plough is ...

- A. not needed**
- B. pulled by a large tractor trailer**
- C. pulled by a combine**
- D. pulled by a tractor**

20. Many large sections of Alberta's forest are being harvested by very large forestry companies. A responsible forester will improve the conditions to make a growing forest more productive. They replant trees to replace the ones they have cut down. This practice is called ...

- A. felling**
- B. reforestation**
- C. skidding**
- D. diversification**

21. It has been raining for two weeks straight. There is too much moisture in the soil and the process of decomposition cannot take place. Organic matter does not decompose, but collects at the surface of the soil. The primary reason that decomposition of the organic matter cannot occur is because the soil lacks enough ...

- A. oxygen**
- B. carbon dioxide**
- C. decomposers**
- D. heat**

22. Healthy plants require large amounts of six nutrients. All of these nutrients have specialized functions. Fertilizer usually contains three of the six nutrients, including ...

- A. nitrogen, potassium, sulphur**
- B. phosphorus, sulphur, calcium**
- C. potassium, nitrogen, phosphorus**
- D. magnesium, potassium, calcium**

23. Salinization of the soil is just as troublesome as dry soil. The soil is less able to grow crops because of two factors, which are ...

- A. not enough moisture and too much vegetation**
- B. too much moisture and not enough vegetation**
- C. too much evaporation and too much vegetation**
- D. excess ground water and too much vegetation**

24. The practice of cultivating land to control weeds, without planting crops is called ...

- A. fall tillage**
- B. summer fallow**
- C. spring irrigation**
- D. wintering crops**

25. Many farming practices are used to save the soil from excess erosion. Planting trees or shrubs along the edges of field is one such practice. The purpose behind this is to ...

- A. **provide travel corridors for water**
- B. **enhance crop rotation**
- C. **plant the seeds through the stubble**
- D. **reduce wind damage and trap snow**

26. Insects, fungi and weedy plants are the pests that cause the most damage to plants. Fungi and bacteria cause ...

- A. **loss of moisture**
- B. **infection**
- C. **nutrients to become inactive**
- D. **plant loss due to consumption**

27. Canola is popular with insects, fungus and weeds. One such pest is wild oats. This pest causes damage because it ...

- A. **devours the canola plant**
- B. **steals nutrients and moisture**
- C. **causes infection in the canola seed**
- D. **cuts off the flow of water to the canola stem**

28. Trying to get rid of certain pests can be a problem. If a non-native species is introduced to a certain area, without natural predators, it often becomes a pest. One such example was the introduction of the Dandelion to North America from Europe. It was brought here as a ...

- A. **salad vegetable**
- B. **showcase flower**
- C. **food source for cattle**
- D. **medicinal crop**

29. Herbicides, insecticides and fungicides are used to control weeds, insects and fungus. The use of these pesticides caused another problem. They build up over time in the the food chain and get stored in organisms, just as food energy is stored. This process is called...

- A. **ecoaccumulation**
- B. **bioaccumulation**
- C. **pesticide residue**
- D. **chemical pollution**

30. Organic food is food that has been grown without the use of chemical fertilizers and chemical pesticides. To provide the needed nutrients to grow the plants, they use ...

- A. **manure and compost**
- B. **tillage and crop rotation**
- C. **mulching and companion planting**
- D. **clean equipment and good seeds**

31. Canada Thistle, Lygus Bugs and Wild Oats are just a few of the pests that attack this crop ...

- A. **Oats**
- B. **Barley**
- C. **Canola**
- D. **Wheat**

32. Pests are classified into four main types. These types of pests are problematic because they eat crops. They are ...

- A. **weeds**
- B. **fungi**
- C. **insects**
- D. **bacteria**