



Unit 2 – Matter and Chemical Change

Student Name _____

Class _____

Section 1

Properties of Matter

Aluminum foam is used to create lighter, safer cars. The reason that a lighter car is a safer car is because aluminum foam is ...

- A. less rigid
- B. much cheaper than aluminum
- C. unable to be dented
- D. able to absorb more impact energy

2.



This symbol means ...

- A. flammable
- B. corrosive
- C. dangerously reactive
- D. biohazardous

3.



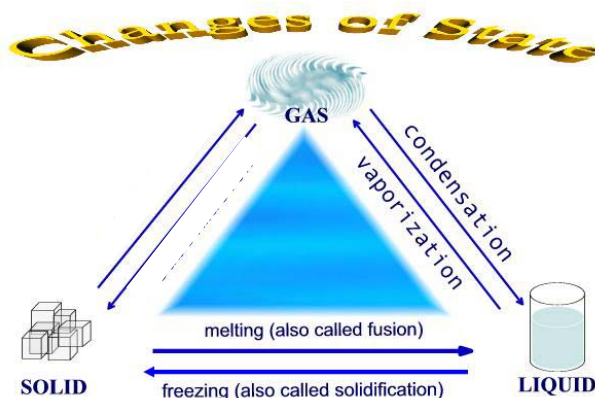
This symbol means ...

- A. caution
- B. warning
- C. danger
- D. special care

4.

When a substance undergoes a change of state it can use energy or give off energy. The change that occurs when a substance changes from a gas to a solid is referred to as ...

- A. fusion
- B. deposition
- C. sublimation
- D. condensation



5. A substance's ability to resist being scratched is the physical property of matter known as ...

- A. ductility
- B. malleability
- C. hardness
- D. conductivity

6. An obvious chemical property of pancakes is ...

- A. ability to combine ingredients easily
- B. the positive reversibility of the process
- C. the heat it gives off
- D. the new substance that appears to form

7. The difference between an element and a compound is that an element ...

- A. is a pure substance and a compound is a mixture
- B. has only one substance, while a compound has more than one substance
- C. can be made into a mixture, but a compound cannot
- D. Can be a pure substance, while a compound cannot be a pure substance

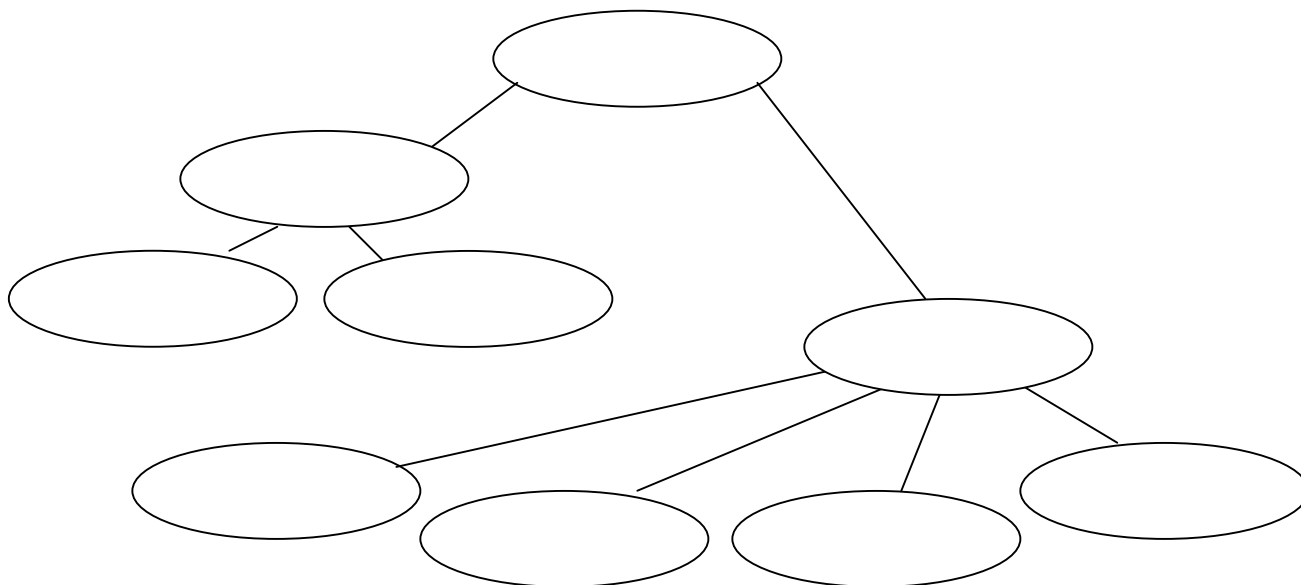


Unit 2 – Matter and Chemical Change

8. Use the following words to complete a visual organizer, showing the relationships between and among the words provided. Use each word only once.

Pure Substances, Colloids, Matter, Solutions, Compounds,

Mixtures, Mechanical Mixtures, Suspensions, Elements



9. A cloudy mixture in which the particles of the suspended substance are so small they cannot be easily separated out is called a ...
- A. mechanical mixture
 - B. suspension
 - C. colloid
 - D. solution
10. Physical or chemical change can be identified by evidence. When a substance undergoes a chemical change the pieces of evidence used include all of the following, **EXCEPT** ...
- A. colour
 - B. odour
 - C. state
 - D. formation of a gas
11. Freeze-drying is a technique used to preserve food for long periods of time. In the freeze-drying method the first step is to ...
- A. add hot water
 - B. put it in a pressure chamber
 - C. freeze the water, in the food
 - D. refrigerate the food
12. MRE's are especially useful for astronauts, soldiers and mountain climbers. They are heated in a special package called a 'flameless ration heater'. MRE stands for ...
- A. Military Ration Envelope
 - B. Mission Ration Envelope
 - C. Meal, Ready to Eat
 - D. Meals Requiring Energy